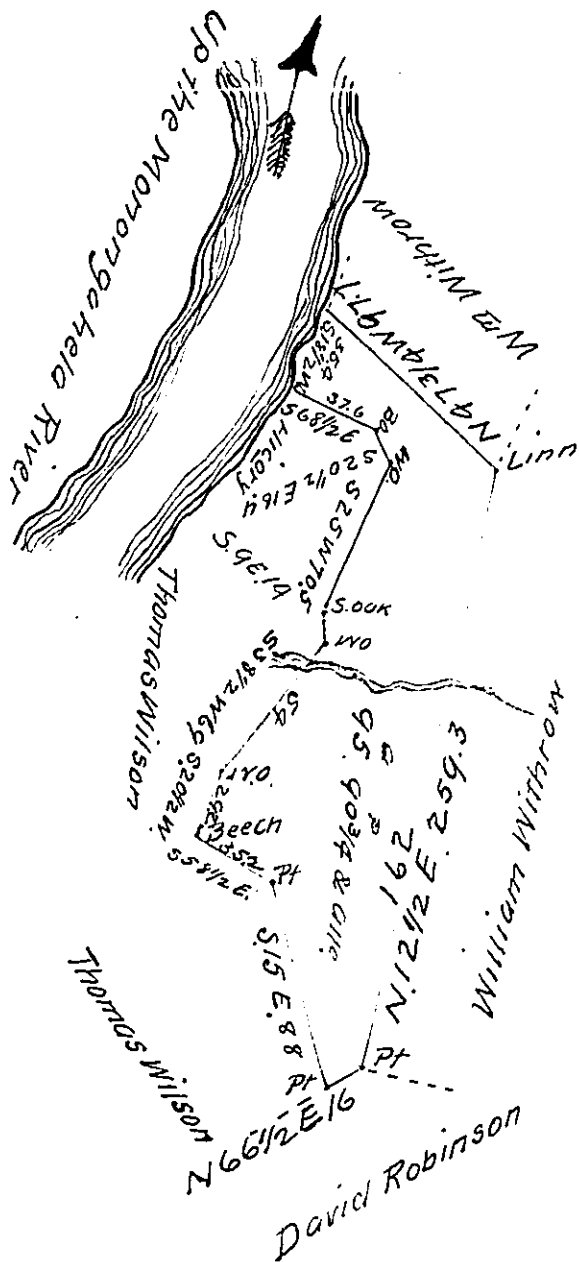


Field Notes of said Diagram,
Beginning at a post a corner of David
Robinson's and William Withrow &
running with Withrow



N 12 1/2 E	259.3	Limit
N 4 7/8 W	97.7	River
S 18 1/2 W	35.4	Up the river Hick
S 68 1/2 E	37.6	Bo or Red oak
S 20 1/2 E	16.4	WO
S 25 W	70.5	S. OAK
S 9 E	14	WO
S 38 1/2 W	69	WO
S 20 1/2 W	29.2	Beech
S 58 1/2 E	35.2	post
S 15 E	88	post to Robinson
N 66 1/2 E	16	pt to Withrow

In pursuance of a warrant dated March the 8th 1823,
there was survey'd for Moses Curry the above described
Tract of Land containing Ninety five acres & ninety per-
ches & 3/4 of a pr & allowance of 6 pr Ct.
situate in Elizabeth Township Allegheny County Survey'd
Nov^r 7th 1823

Robt Beatty D.S.

Sam^l Cochran Esq^r
Surv^r. Gen^l. of Penn^a

IN TESTIMONY that the above is a copy of the original remaining on file in
the Department of Internal Affairs of Pennsylvania, made
conformably to an Act of Assembly approved the 16th day of
February, 1833, I have hereunto set my Hand and caused
the Seal of said Department to be affixed at Harrisburg,
this Sixth day of March 1912

Henry Houck
Secretary of Internal Affairs.